

# ROD RESISTORS

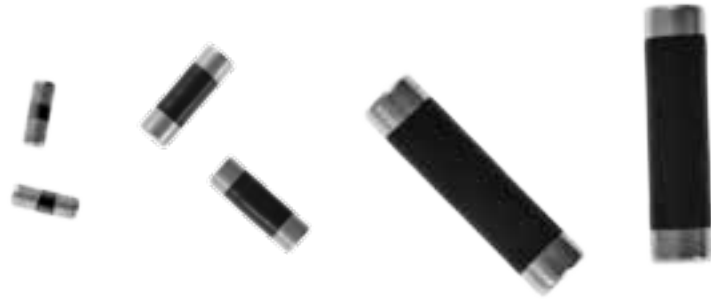


## General Specifications

Substrate: Alumina, Beryllium Oxide,  
or Aluminum Nitride

Resistive Material: Thin Film (NiCr)

Terminal Ends: Tin Plated over Nickel  
(Gold Plating also available)



Resistance Range	Tolerance	Temperature Coefficient	Temperature Range
10-500 Ohms	±1%, ±2%, or ±5%	±75ppm/°C	-65° to +175°C

### ALUMINA ROD RESISTORS

Part Number	O.D. ±0.003	L ±0.010	T ±0.015	Power (W)
R20L125	0.020 [0.51]	0.125 [3.18]	0.035 [0.89]	0.25
R40L115	0.040 [1.02]	0.115 [2.92]	0.031 [0.79]	1.00
R40L125	0.040 [1.02]	0.125 [3.18]	0.035 [0.89]	1.00
R62L187	0.062 [1.57]	0.187 [4.75]	0.063 [1.60]	2.00
R62L375	0.062 [1.57]	0.375 [9.53]	0.047 [1.19]	2.00
R80L187	0.080 [2.03]	0.187 [4.75]	0.063 [1.60]	2.00
R125L250H*	0.125 [3.18]	0.250 [6.35]	0.063 [1.60]	1.00
R125L406	0.125 [3.18]	0.406 [10.31]	0.109 [2.77]	2.00
R125L500	0.125 [3.18]	0.500 [12.70]	0.063 [1.60]	2.00

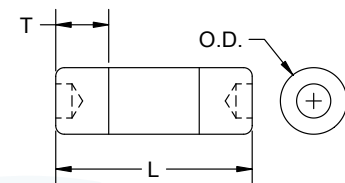
### BERYLLIUM OXIDE ROD RESISTORS

Part Number	O.D. ±0.003	L ±0.010	T ±0.015	Power (W)
R40B115	0.040 [1.02]	0.115 [2.92]	0.031 [0.79]	5.0
R40B125	0.040 [1.02]	0.125 [3.18]	0.035 [0.89]	5.0
R60B120	0.060 [1.52]	0.120 [3.05]	0.031 [0.79]	10.0
R62B187	0.062 [1.57]	0.187 [4.75]	0.063 [1.60]	10.0
R62B375	0.062 [1.57]	0.375 [9.53]	0.047 [1.19]	10.0
R80B187	0.080 [2.03]	0.187 [4.75]	0.063 [1.60]	20.0
R125B500	0.125 [3.18]	0.500 [12.70]	0.063 [1.60]	25.0
R250B750	0.250 [6.35]	0.750 [19.05]	0.125 [3.18]	40.0
R375B750	0.375 [9.53]	0.750 [19.05]	0.125 [3.18]	75.0

Specifications continued on next page.

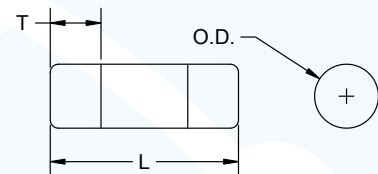
### Mechanical Outline

\*for R125L250H Only



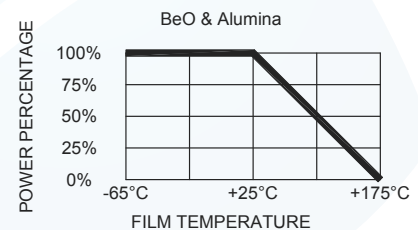
### Mechanical Outline

(For all except R125L250H)



Dimensions: Inches [mm]

### Derating Curve



## General Specifications

Substrate: Alumina, Beryllium Oxide, or Aluminum Nitride

Resistive Material: Thin Film (NiCr)

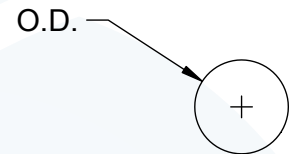
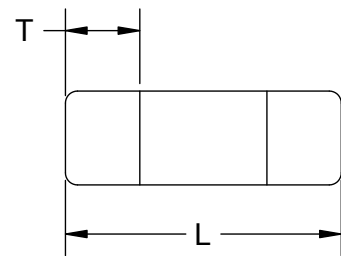
Terminal Ends: Tin Plated over Nickel  
(Gold Plating also available)



### ALUMINUM NITRIDE ROD RESISTORS

Part Number	O.D. $\pm 0.003$	L $\pm 0.010$	T $\pm 0.015$	Power (W)
R40N115	0.040 [1.02]	0.115 [2.92]	0.031 [0.79]	5.0
R60N120	0.060 [1.52]	0.120 [3.05]	0.031 [0.79]	10.0
R62N187	0.062 [1.57]	0.187 [4.75]	0.063 [1.60]	10.0
R62N375	0.062 [1.57]	0.375 [9.53]	0.047 [1.19]	10.0
R125N500	0.125 [3.15]	0.500 [12.70]	0.063 [1.60]	25.0
R250N750	0.250 [6.35]	0.750 [19.05]	0.125 [3.15]	40.0
R375N750	0.375 [9.53]	0.750 [19.05]	0.125 [3.15]	75.0

### Mechanical Outline



Dimensions: Inches [mm]



### Ordering Information:

Example:

